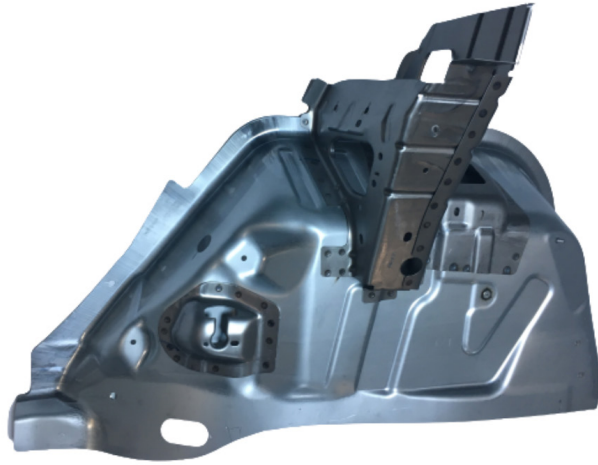




PRESMETAL OTOMOTIV YAN SAN.VE TIC. A.S.



www.presmetal.com.tr

ABOUT US

Presmetal OTOMOTIV is stamping, welding and metal tooling company in the global automotive supply industry. Company is established in 1983 and supplying parts for major OEM and tier 1 companies globally.

Products Groups;

Stamped sheet metal products, Assembled and welded sheet metal products (body, seat, deep drawing and lighting parts, A-Pillars, fenders, doors, etc.)

Tool design and manufacturing (progressive, tandem, transfer tools and welding-controls fixtures)

Capabilities;

371 qualified personnel,
Strong machine park (300T-800T Presses & Schuler blanking pres) (21 spot welding, 2 gas welding robots, 7 fixed spot welding, PLS Door Line)
22.650 m2 total closed production area in Bursa, Turkey,
Over 20M ̄ Turnover (%3 Export)

Main Customers;

Fiat Group, Renault, Magneti Marelli, Faurecia, Martur Seating



Company

PRODUCTS

- 356 Egea Sedan HB, SW Passaruota
- 356 Battery Tray
- 356 MCA and Martur V710 Parts
- Progressive & Tandem Tools



CERTIFICATES

